



Safeguarding & Child Protection Policy

Introduction

Safeguarding is the responsibility that an organisation has to ensure that their employees and volunteers, partners, vendors, operations and programmes do no harm to children or vulnerable adults (together referred to as ‘vulnerable people’ under this policy); that they do not expose them to the risk of discrimination, neglect, harm and abuse; and that any concerns the organisation has about the safety of vulnerable people within the communities in which they work, are dealt with and reported to the appropriate authorities. It is also the responsibility that the organisation has for protecting its employees and volunteers when they are vulnerable, for example, when ill or at risk of harm or abuse.

Child protection is a central part of but not separate to safeguarding. It is the process of protecting individual children identified as either suffering or at risk of significant harm as a result of abuse or programme of work. It also includes measures and structures designed to prevent and respond to abuse.

Over recent years, there has been increasing recognition of the way in which children, young people and vulnerable adults can be at risk of discrimination, neglect, abuse and exploitation by those who are in positions of trust and power over them, including through international development activities. As a consequence, there has been a significant increase in the efforts made by development organisations to ensure that no harm results from the contact their employees, volunteers and other representatives have with their target populations or communities.

Through their work, United Social Ventures employees, employees of partner organisations and volunteers may engage with young people and vulnerable adults either directly or indirectly. United Social Ventures recognises it has an obligation to put in place all reasonable safeguarding measures to ensure, as far as possible, the safety and protection of children, young people and vulnerable adults, including those with whom we work and those in the communities where United Social Ventures work is undertaken.

Purpose

The purpose of this policy and associated procedures is to provide clarity to ALL on how they should engage with children and vulnerable adults when working for, on behalf of, or in partnership with United Social Ventures. It is also to help us make sure that employees, volunteers and other representatives are protected. It is intended to help us to have a common understanding of safeguarding issues, develop good practice across the diverse and complex areas in which we operate and thereby increase accountability in this crucial aspect of our work.

This policy constitutes United Social Ventures’s global policy - it identifies our minimum standards and may exceed the requirements of local legislation.

Any breach of this policy will be treated as a disciplinary matter, which may result in immediate termination of employment or contract, withdrawal of volunteer status, and reporting to the police, relevant regulatory authority or other body.

Definitions

Abuse - a violation of an individual’s human and civil rights by any other person or persons. It can take the form of physical, psychological, financial or sexual abuse, neglect or negligent



Safeguarding & Child Protection Policy

treatment or commercial or other exploitation, resulting in actual or potential harm to the health, survival, development or dignity of a child or vulnerable adult.

Abuse can be a single act or repeated acts and can be unintentional or deliberate. Abuse often involves criminal acts.

Discriminatory abuse – abuse motivated by a vulnerable person’s age, race, nationality, sex, sexual orientation, disability, or other personal characteristic.

Financial or material abuse - including theft, fraud, exploitation, pressure in connection with wills, property or inheritance or financial transactions, or the misuse or misappropriation of property, possessions or benefits.

Neglect - the persistent failure to meet a vulnerable person’s basic physical and/or psychological needs, likely to result in the serious impairment of his/her health or development. Examples include failure to provide adequate food, clothing and shelter, failure to protect them from physical or psychological harm or danger; failure to ensure adequate supervision (including the use of inadequate care-givers); or failure to ensure access to appropriate medical care or treatment. It may also include neglect of, or unresponsiveness to, a vulnerable person’s basic emotional needs.

Physical abuse – includes hitting, shaking, throwing, poisoning, burning or scalding, drowning, suffocating or otherwise causing physical harm, misuse of medication, restraint, or inappropriate sanctions.

Psychological abuse - includes emotional abuse, threats of harm or abandonment, deprivation of contact, humiliation, blaming, controlling, intimidation, coercion, harassment, verbal abuse, isolation or withdrawal from services or supportive networks. Examples include not giving a vulnerable person opportunities to express their views, deliberately silencing them or ‘making fun’ of what they say or how they communicate. It may feature age or developmentally inappropriate expectations being imposed on a vulnerable person, which may include interactions that are beyond a vulnerable person’s developmental capability. It may involve serious bullying (including cyber bullying), or the exploitation or corruption of a vulnerable person.

Sexual abuse - involves forcing, enticing or coercing someone to take part in sexual activities, whether or not the vulnerable person is aware of what is happening. The activities may involve physical contact, including assault by penetration (for example, rape or oral sex) or non-penetrative acts such as masturbation, kissing, rubbing and touching outside of clothing. They may also include non-contact activities, such as involving a vulnerable person in looking at, or in the production of, sexual images, watching sexual activities, encouraging children to behave in sexually inappropriate ways, or grooming a child in preparation for abuse (including via the internet). Sexual abuse can be carried out by adults or other children.

Sexual harassment - includes verbal, written, or physical behaviour of a sexual nature, directed at an individual, or against a particular group, because of that person's or group's gender, or based on gender stereotypes or manifestation, when that behaviour is unwelcome or when submission or consent to the behaviour is believed to carry consequences for another person's education, employment, living environment, or participation in a program or activity. This may include (but is not limited to) pressuring an individual to engage in sexual behaviour for some educational or employment benefit or making a real or perceived threat that rejecting sexual behaviour will carry a negative consequence for the individual. Another manifestation is when the behaviour has the effect of limiting or denying another person's work or performance, or creating an intimidating, hostile, or demeaning environment. This may include



Safeguarding & Child Protection Policy

(but is not limited to) persistent, unwelcome efforts to develop a romantic or sexual relationship, unwelcome commentary about an individual's body or sexual activities, repeated unwanted sexual attention, repeated and unwelcome sexually oriented teasing, joking, or flirting. Comments or communications could be verbal, written, or electronic. Behaviour does not need to be directed at or to a specific student, but rather may be generalised unwelcome and unnecessary comments based on sex or gender stereotypes. Sexual harassment may be found in a single episode, as well as in persistent behaviour.

Child – United Social Ventures regards a child as anyone under the age of 18 years, irrespective of the age of majority in the country in which the child lives or in their home country. It is widely recognised that children are generally more vulnerable to abuse and exploitation due to factors such as age, gender, social and economic status, developmental stage, and dependence on others.

Vulnerable person/people – for the purposes of this policy this is an umbrella term which covers children and vulnerable adults.

Vulnerable adult - a person, 18 years and above, who by reason of disability, age, gender, social and economic status, or illness, the context they are in, may be unable to take care of or to protect him or herself against abuse, harm or exploitation.

Youth or young people - individuals aged 15 to 25 (15 to 35 in some countries) – United Social Ventures recognises that this group spans the categories of ‘children and ‘adults’ but regards young people as having particular safeguarding needs and requiring distinct consideration aside from younger children and older adults.

Scope

This policy is mandatory for all United Social Ventures employees worldwide. For the purposes of this policy, ‘employee’ is defined as anyone who works for or on behalf of United Social Ventures, either in a paid or unpaid capacity. This therefore includes directly employed staff, trustees, contractors, employees and volunteers of sub contractors, agency workers, consultants, volunteers, interns and all visitors to United Social Ventures work programmes and offices.

It also covers youth-led ventures who are beneficiaries of our programs and implementing partners, and who we expect to work under the policy as a condition of their involvement with United Social Ventures.

This policy demonstrates how United Social Ventures will meet its legal obligations and reassure volunteers, employees, partners and members of the public:

- a) On what they can expect UNITED SOCIAL VENTURES to do to protect and safeguard vulnerable people.
- b) That they are able to safely voice any concerns through an established procedure.
- c) That all reports of abuse or potential abuse are dealt with in a serious and effective manner.
- d) That there is an efficient recording and monitoring system in place.
- e) That employees, volunteers, sub contracted agencies and partners receive appropriate induction on safeguarding.
- f) That a robust ‘safe’ recruitment procedure is in place.



Safeguarding & Child Protection Policy

There are additional procedures in place that apply to those that work or have contact with, either directly or indirectly, children or vulnerable adults or who live in communities alongside them.

Policy Statement

United Social Ventures has zero tolerance against abuse and exploitation of vulnerable people. United Social Ventures also recognises that safeguarding is everyone's responsibility and that it has an obligation to put in place reasonable measures to ensure, as far as possible, the safety and wellbeing of vulnerable people with whom we work and those in the communities in which we live.

United Social Ventures works to the following key principles to protect vulnerable people:

- Everyone has an equal right to protection from abuse and exploitation regardless of age, race, sex, sexual orientation, marriage and civil partnership, pregnancy or having a child, gender reassignment, language, religion, political or other opinion, national, ethnic or social origin, property, disability, birth or other status.
- The best interests of the vulnerable person are paramount and shall be the primary consideration in our decision making.
- United Social Ventures will take responsibility to meet our obligations regarding our duty of care towards vulnerable people, and take action where we believe that a child or vulnerable adult is at risk or is actually harmed.
- United Social Ventures will ensure that employees and volunteers are inducted in our Safeguarding Standards (Appendix 1) and procedures as a key part of the recruitment and on boarding process.
- United Social Ventures will ensure that all partners are informed and in compliance with our Safeguarding Standards.
- When working with or through partners or sub contracted agencies, United Social Ventures will ensure that their safeguarding procedures are consistent and in line with the principles and approaches set out in this policy.
- United Social Ventures recognises that an element of risk exists, and while we may never be able to totally remove this, we need to do all we can to reduce it or limit its impact.
- United Social Ventures respects confidentiality and has a responsibility to protect sensitive personal data. Information should only be shared and handled on a need to know basis, that is, access to the information must be necessary for the conduct of one's official duties. Only individuals who have legitimate reasons to access the information are allowed to receive it.
- United Social Ventures commits to monitoring the implementation of the safeguarding policy. This policy will be reviewed every two years and earlier if necessary.
- Cultural sensitivity - United Social Ventures seeks always to work in ways which are culturally sensitive and that respect the diverse nature of the people we work with. We recognise that there are many different ways of thinking and taking care of vulnerable people and making sure they are protected. It is acknowledged that protecting these groups of individuals and being culturally sensitive can be a difficult balancing act. We endorse the United Social Ventures Nations Convention on the Rights of the Child general principle, that all the rights guaranteed by it must be available to all children without discrimination; and article 19 which accords equal rights to protection for children from abuse. Every child matters everywhere in the world. Culture must not be used as an excuse to abuse children or vulnerable adults.



Safeguarding & Child Protection Policy

The CEO and the Chair of Trustees are available to give guidance on how to interpret the policy and its application to the local context.

Responsibilities

All employees, volunteers, consultants, agency staff, sub contractors, partner organisations, youth-led ventures, and visitors are obliged to follow this policy and maintain an environment that prevents exploitation and abuse and which encourages reporting of breaches of this policy using the appropriate procedures.

All people working with United Social Ventures will:

- Read, understand and adhere to the United Social Ventures Global Safeguarding Policy and United Social Ventures Global Code of Conduct Policy
- Strive to promote a zero tolerance approach to discrimination, sexual harassment and abuse in all working environments
- Strive to develop relationships with all stakeholders which are based on equality, trust, respect and honesty
- Place the safety and welfare of children and vulnerable people above all other considerations
- Report any concerns they may have about the welfare of a child or vulnerable person
- Report any concerns they may have about the behaviour of a United Social Ventures representative in relation to safeguarding
- Avoid being alone with one child or vulnerable person, especially in an enclosed space (e.g. with the door closed). In a one-to-one situation with a child or vulnerable person, where privacy and confidentiality are important, try to make sure that another adult knows the contact is taking place and why. As far as possible ensure another adult is in sight and that the child or vulnerable person knows another adult is around
- Be vigilant and aware of how actions can be misinterpreted by children and vulnerable people. Actions made with good intentions can seem intrusive or intimidating to some. Be aware of the impact of actions, and sensitively address any misunderstanding.

All people working with United Social Ventures will not:

- Sexually harass, assault or abuse another person
- Physically harass, assault or abuse another person
- Emotionally abuse another person, such as engaging in behaviour intended to shame, humiliate, belittle or degrade
- Condone, or participate in behaviour which is abusive, discriminatory, illegal, or unsafe
- Develop, encourage or fail to take action of relationships with children or other vulnerable people which could in any way be deemed sexual, exploitative or abusive
- Act in ways that may be violent, inappropriate or sexually provocative
- Agree with a child to keep a secret which has implications for their safety or the safety of other vulnerable people.

Designated Safeguarding Officers

Designated safeguarding officers are responsible for handling reports or concerns, about the protection of vulnerable people, appropriately and in accordance with the procedures that underpin this policy.



Safeguarding & Child Protection Policy

The CEO (Leo Henghes) and a trustee (Katie Husselby) are United Social Ventures's designated safeguarding officers.

They are responsible for:

- ensuring employees, volunteers, consultants, visitors and partner organisations are aware of the policy and are supported to implement and work in accordance with it
- creating a management culture that encourages a focus on safeguarding
- acting immediately if they become aware of any safeguarding concerns
- being supportive towards employees or volunteers who complain about breaches in this policy
- monitoring and recording safeguarding concerns
- ensuring referrals to the relevant authorities happen without delay
- updating safeguarding training for all staff
- ensuring this policy is reviewed every 2 years or earlier if necessary
- ensuring it is implemented throughout the organisation and safeguarding training given
- ensuring monitoring and recording procedures are implemented

Trustees

The Board of Trustees holds ultimate accountability for this policy.

Procedure Overview

General

Ensure that United Social Ventures has a format for carrying out and implementing risk assessments at all levels of the organisation.

Train and support the Designated Safeguarding Officers in their work and in any action they may need to take in order to protect vulnerable people.

Recruitment and Selection:

- Safe recruitment and vetting processes are followed for all volunteers, employees, consultants and partners, including the taking up of references.
- Where an employee or volunteer is engaged in 'regulated activity' (direct working alone with vulnerable individuals), a criminal background check will be undertaken as part of the recruitment process. (For more detailed guidance, contact a Designated Safeguarding Officer.)
- All United Social Ventures employees and volunteers must sign and abide by this safeguarding policy and the Code of Conduct. The code sets out the standards of practice we expect of employees and volunteers - in terms professional competence, integrity, acting as a representative and in safeguarding - which support our vision, mission and values. (For more detailed guidance, refer to the Global Code of Conduct).

Induction and Support:

Advice, support, and training on safeguarding will be provided to all employees and volunteers on:

- What they should do in the event of a disclosure
- What to do if they have concerns about the welfare of a child



Safeguarding & Child Protection Policy

- What to do if they have concerns about a United Social Ventures employee, volunteer, or employee of a partner organisation or youth-led venture

Clear processes for reporting and dealing with safeguarding concerns and incidents will be widely communicated, regularly reviewed and consistently applied. Where allegations are made about an employee, careful consideration by the Board of Trustees must take place about the appropriateness of the person continuing to work with United Social Ventures, and any other actions to be taken.

Data Protection

Ensure that personal information is kept confidential unless we have the agreement of the individual and/or their parent/guardian, except where it is necessary to pass this to a specialised child welfare or law enforcement agency in relation to a safeguarding incident.

Minimum Standards

Where employees or volunteers are contracted by other employers, or when working with partners, sub contracted agencies, United Social Ventures will brief them on our safeguarding policy and ask for information on how the organisation works to protect vulnerable people and ensure that they meet our Safeguarding Standards.

Social Media

Relating to protection of children and vulnerable adults, United Social Ventures, and all employees, will:

- Use names and images of children or vulnerable adults which are respectful and not expose them to further vulnerability (not degrading or showing sexual images of children naked or partially clothed).
- Reproduce images and use names of children only where we have the written permission of their parents / guardians using a consent form.
- Reproduce images and use names of vulnerable adults only where we have their written permission or that of their parents/guardians, whichever is the most suitable.
- Make clear to vulnerable people and their families that agreement to providing information or images is not a condition of involvement in United Social Ventures's activities and programmes.

Raising and responding to concerns

United Social Ventures places a mandatory obligation on all employees, volunteers, contractors and partners to report concerns, suspicions, allegations and incidents which indicate actual or potential abuse or exploitation vulnerable people or which suggests this policy may have in any other way been breached. It is not the responsibility of the employees to decide whether or not abuse has taken place, however, concerns should be raised with an individual's line manager or a Designated Safeguarding Officer who will initiate the procedure for dealing with suspected or actual incidents of abuse.



Safeguarding & Child Protection Policy

Designated Safeguarding Officers are responsible for ensuring that the reporting procedure is followed so that suspected or actual cases of abuse are responded to appropriately and consistently, and referred to the relevant statutory authority.

To ensure that all such situations are handled appropriately and effectively:

- Reports must be made, notes recorded, and decisions and actions taken
- United Social Ventures is not an investigative authority. It is essential that referrals are made to the relevant law enforcement agency to ensure that appropriate protection and support is given to the vulnerable individual, and that any evidence is collected in accordance with the law.
- All sensitive and personal data must be kept confidential (including the names of anyone who makes a report of abuse), and be shared on a strictly '*need to know basis*', that is, access must be necessary for the conduct of one's official duties.
- Where a United Social Ventures employee is the subject of an investigation, the Chair of Trustees will lead the case.

Date of Last Update: 1st December 2018

Responsible Owner: Chair of Trustees; CEO



Safeguarding & Child Protection Policy

Appendix 1: Safeguarding Standards

This standard framework is from Keeping Children Safe “Child Safeguarding Standards” and adapted for United Social Ventures. Each standard can be met in whole, in part or not met.

Standard	Potential Evidence of Standard is Being Met
The organisation has a clear safeguarding policy that seeks to prevent harm to children, young people and vulnerable adults	<ul style="list-style-type: none"> • A copy of the policy, signed by employees and the board of trustees.
Policies are publicised to staff, beneficiaries and wider communities	<ul style="list-style-type: none"> • Each employee/trustee has a copy of the safeguarding policy. • The beneficiaries are made aware of the safeguarding policy within their venture/volunteer/internship agreements and contact details of the designated safeguarding officers are given. • Emphasis in United Social Ventures tutorials on the importance of creating a safeguarding policy and code of conduct before contact with vulnerable persons.
The organisation places clear responsibilities and expectations on its staff and associates and supports them to understand and act in line with these	<ul style="list-style-type: none"> • Clear responsibilities for Designated Safeguarding Officers.
Key staff are designated at different levels with clearly defined roles and responsibilities	<ul style="list-style-type: none"> • Job descriptions with clear expectations on those with contact with vulnerable people
There are written guidelines for appropriate and inappropriate behaviour	<ul style="list-style-type: none"> • A written code of conduct, signed by staff and volunteers
There are appropriate learning opportunities to develop and maintain the necessary attitudes, skills and knowledge to keep vulnerable people safe	<ul style="list-style-type: none"> • Evidence of induction for United Social Ventures volunteers – signed child protection policies and copies of code of conduct • Designated safeguarding officer reassesses policies and procedures every two year
Organisations carry out local mapping exercises which provide information on the legal, social welfare and child protection arrangements.	<ul style="list-style-type: none"> • Contact details of safeguarding authorities updated every year. • Legal requirements are included in policies
Safeguarding issues are integrated into programme design, delivery and evaluation	<ul style="list-style-type: none"> • Evidence of safeguarding issues in project proposals, plans, needs • Risk assessments for all activities include safeguarding elements • Safeguarding issues integrated into tutorial syllabus
There are procedures for responding to safeguarding concerns	<ul style="list-style-type: none"> • Procedure Flowchart in place
Implementation of safeguarding policies and procedures is monitored	<ul style="list-style-type: none"> • Copies of reports on safeguarding issues to trustees annually • Copies of minutes of meetings to review practice
Learning from issues captured and informed future policy and procedure reviews	<ul style="list-style-type: none"> • Incident reports produced
Policies and procedures reviewed at least every three years	<ul style="list-style-type: none"> • Evidence of review in annual plans/strategies



Safeguarding & Child Protection Policy

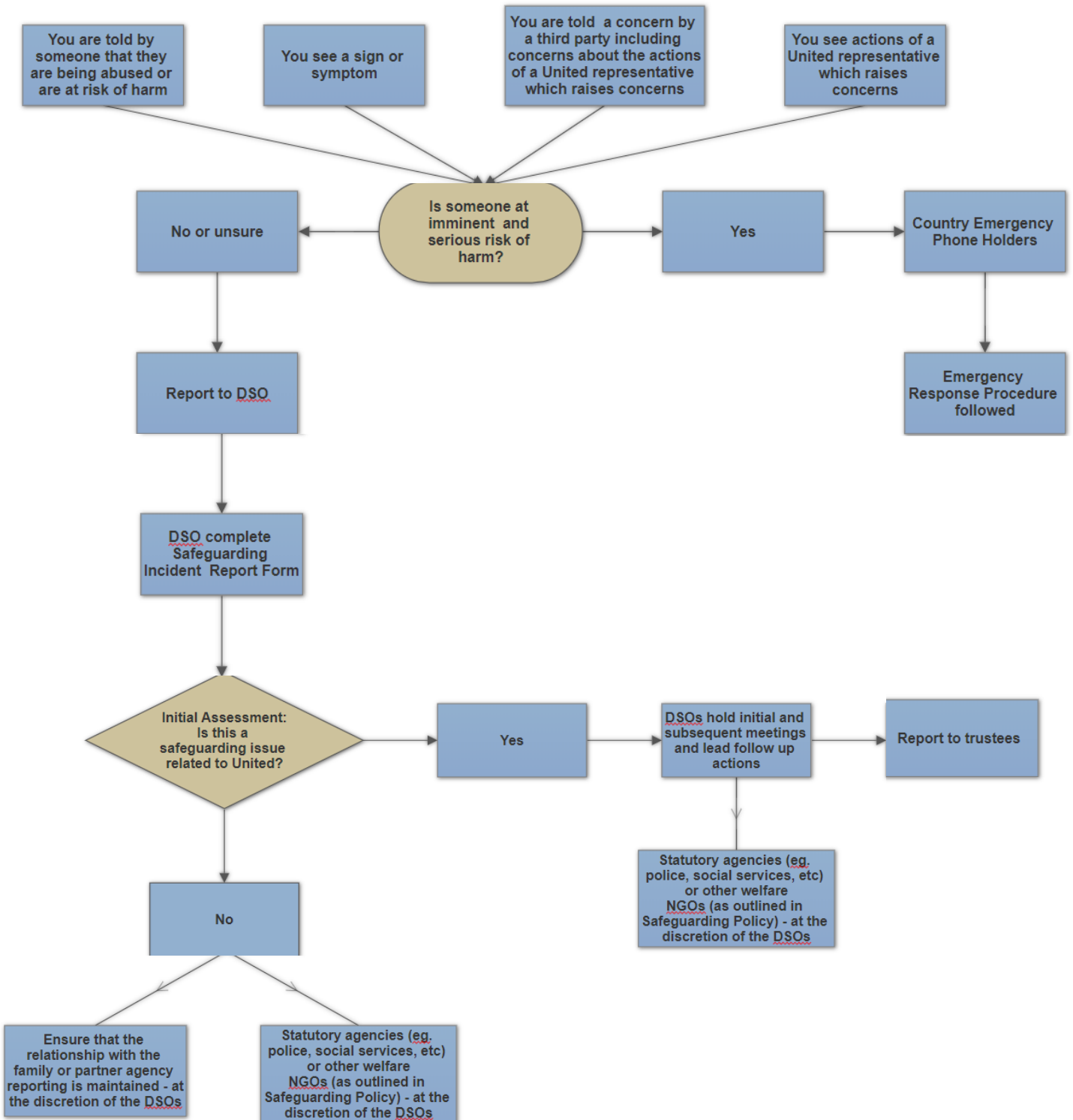
Appendix 2: Safeguarding Incident Report Form

This form will be used by members of staff or volunteers to record disclosures or suspicions of abuse. The completed form should be sent to a line manager, a Designated Safeguarding Officer, or whistleblowing@unitedsocialventures.org.

Your Name	Date of Writing Report
Your Position	Contact phone number
The vulnerable person's details	
Name	
Address/phone number	
Date of birth	
Other relevant details about them: <i>Eg family circumstances, physical and mental health, any communication difficulties.</i>	
If a child, parent/guardian/carers details:	
Details of the allegations/suspensions	
Are you recording: <ul style="list-style-type: none"> • Disclosure made directly to you by the vulnerable person? • Disclosure or suspicions from a third party? • Your suspicions or concerns? 	
Date and time of disclosure	
Date and time of incident	
Details of the allegation/suspensions. <i>State exactly what you were told/observed and what was said. Use the persons own words as much as possible</i>	
Action taken so far:	
Signed	



Appendix 3: Procedures Flowchart





Safeguarding & Child Protection Policy

Appendix 4: Contact Details of Safeguarding Authorities

Institution	Person	Contact Details
Uganda Police Force, Kira Road Division	ASP. Nakiganda Hellen <i>OC Child and Family Protection Unit</i>	+256 41 4235643 (headquarters' line) +256775259576 +256702840474 Kira Road Division Headquarters, Kampala P.O. Box 7062
Sauti Child Helpline		Call: 116
Children at Risk Action Network (CRANE)		+256 414 271733 +256 776 522601 keepingchildrensafe@cranenetwork.org
InterAid Uganda		0800113113 0758836759 0756844376
African Center for Treatment and Rehabilitation of Torture Victims		0800202791
Refugee Law Project		0776897057 (or 0776897075)
United Social Ventures Whistleblowing/ Designated Safeguarding Officer	Katie Husselby <i>Trustee, United Social Ventures</i>	whistleblowing@unitedsocialventures.org +447708249339
United Social Ventures CEO	Leo Henghes	leo@unitedsocialventures.org +256751221927 +256790666642